



**Kiewit**

# INSIDE KIEWIT CORPORATION



## SAFETY FIRST

At Kiewit, nothing is more important than safety. Our craft-led safety programs and commitment at all levels of our operations ensure our focus is on what matters most: that nobody gets hurt. This commitment to excellence extends to our quality, environmental and compliance performance — which is how we drive successful projects for our clients.



Kiewit's safety performance is nearly **10 times** better than the industry average.



Kiewit consistently ranks among ENR's **top 10** contractors.

## About Kiewit

As a construction and engineering leader, Kiewit — through its operating companies — brings a wealth of diverse resources and a track record for delivering the highest quality results on budget and on schedule. Kiewit's size and experience provides the stability, predictability and know-how our clients and partners expect — and the flexibility and overall best value they deserve.





## Our people

Kiewit's commitment to training develops a home-grown, dedicated workforce with unparalleled experience and passion for the work they do.

### EMPLOYEE-OWNED

As one of the largest employee-owned construction and engineering firms in North America, Kiewit employees are personally invested in every project.

### WE VALUE:

People. Integrity. Excellence. Stewardship.



On average, our project managers have been with the company for more than **16 years.**

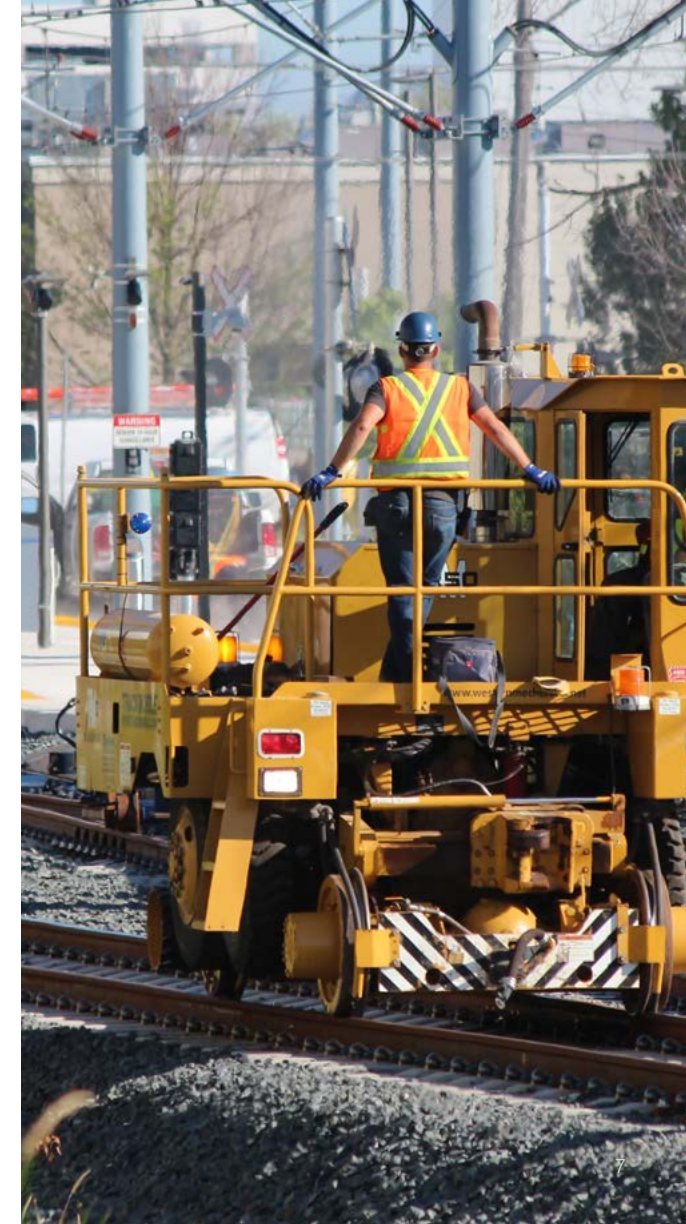




A local contractor with an expansive reach, Kiewit mobilizes **strong craft teams** in any location.

## Our structure

With a strong local presence and access to a vast network of resources, Kiewit can quickly mobilize high-performing craft workforces and provide the best solutions and value for clients. From the smallest jobs to multi-billion dollar projects, our resources and experience ensure clients receive the highest quality, hands-on service they've come to expect.



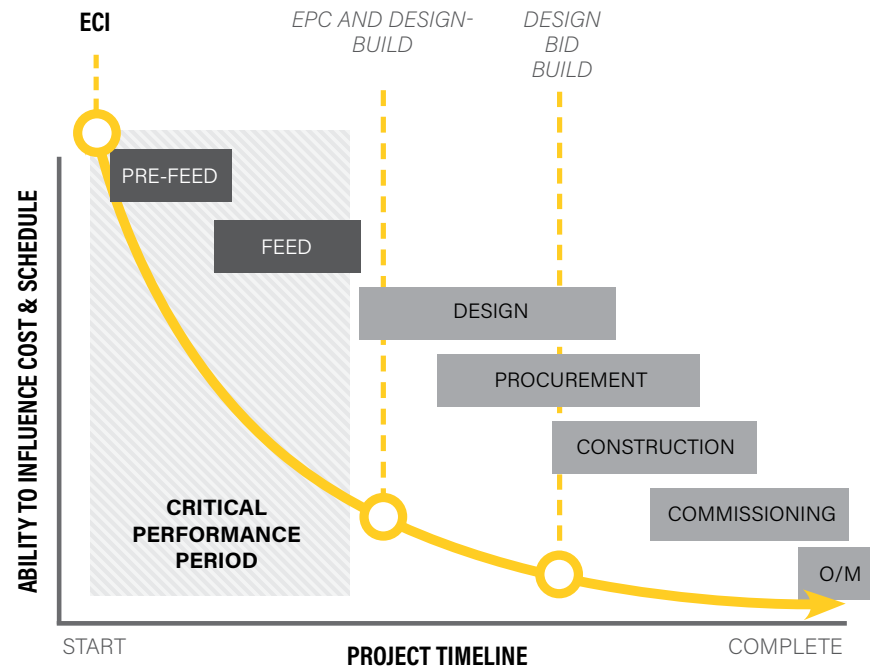
Kiewit's early contractor involvement and ability to self-perform **drive greater certainty** on cost and scheduling.

## PROCUREMENT MODELS

Traditional | A+B | Best value | Negotiated

## DELIVERY METHODS

Bid-build | Design-build / EPC  
CM-at-risk | CM-for-fee | CMGC  
Design-build, finance, operate, maintain  
Engineering services | Integrated project delivery  
Progressive design-build



# Core capabilities

Kiewit has proven experience at any stage of the project development life cycle. The earlier we get involved in project development and design, the more value Kiewit can provide.



## SERVICES

### Engineering

EPC and design-build engineering services

### Construction

Self-perform construction services

### Procurement

Procurement and supply chain management

### Foundations

Geotechnical solutions, ground improvements and deep foundations

### Development

Development, investment and asset management services

## SOLUTIONS

### Decarbonization

Kiewit provides engineering and construction services for alternative and renewable energy, fuels and carbon capture projects — helping design and build the energy projects of the future.



# Construction capabilities

Kiewit's construction roots can be traced back to 1884. Since then, Kiewit has grown to offer services across a variety of markets, successfully delivering some of North America's most challenging projects. With virtually unlimited bonding capacity, we are one of the few construction firms able to compete for projects of all sizes, from small jobs to billion-dollar mega projects.

## TECHNOLOGY

Kiewit uses the most powerful technology available in the industry, including cutting-edge project controls solutions offered through InEight. InEight's apps give Kiewit teams the real-time information they need to make better and faster, fact-based decisions that keep projects on schedule and within budget.



## A POWERFUL FLEET

You can't accomplish what we do every day without one of the largest and most modern, privately owned equipment fleets in North America. It boasts 24,300 units with a replacement value of \$3 billion.



Our technology helps ensure consistency in delivering the **high-quality work** we're proud to call ours.



Kiewit has more than **2,000 engineers** and design professionals across all major engineering disciplines.

## Engineering capabilities

Our construction-focused engineering approach applies constructability best practices — developed with over 135 years of self-performed construction experience across all major markets — to our designs. This approach provides clients with realistic road maps for the entire project development life cycle.

### LESS RISK, MORE CERTAINTY

By identifying and mitigating potential scope gaps and quantity growth before site mobilization, Kiewit's construction-focused engineering approach delivers our clients best-for-project solutions that reflect real schedules and real costs.

### PROCUREMENT

Kiewit's procurement and supply-chain management experts leverage more than \$6 billion of annual procurement spend over a large network of nationwide and local vendors, helping us execute complex schedules on time and at the lowest possible cost.



# Our markets

Kiewit offers services in a variety of markets, successfully delivering some of the most challenging projects throughout North America.



## TRANSPORTATION

Air | Bridge | Marine and port facilities  
Rail | Roads | Tunnels



## OIL, GAS & CHEMICAL

Offshore | Oil sands | Gas processing | Pipeline facilities  
Tanks and terminals | LNG | Refining and renewable fuels | Petrochemical



## POWER

Renewable energy | Power delivery | Energy storage  
Gas and hydrogen-fired generation | Nuclear | Coal retrofit



## BUILDING

Aviation | Commercial | Data center / mission critical | Education | Government  
Healthcare | Hospitality | Manufacturing / industrial | Mixed use / retail  
Sports / entertainment | Transit facilities | Client services / special projects



## WATER

Water treatment and supply | Industrial water | Desalination  
Wastewater and biosolids | Conveyance, dams and storage  
Energy and efficiency



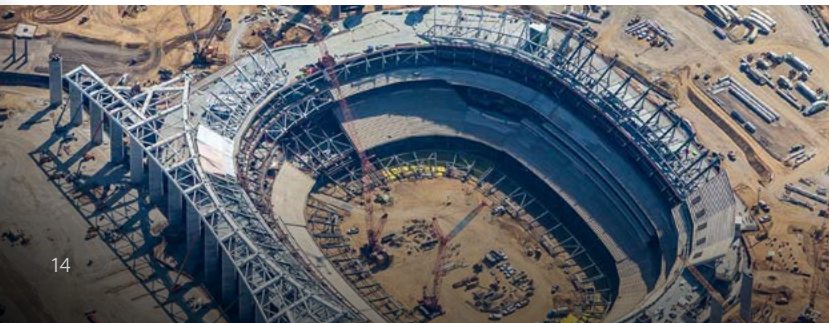
## INDUSTRIAL

Food and beverage | Metals | Mineral processing | Pulp and paper  
Industrial energy | Renewable natural gas



## MINING

Contract mining | Mine infrastructure | Joint venture / owned operations  
Mine management and engineering | Reclamation







Air | Bridge | Marine and port facilities  
Rail | Roads | Tunnels

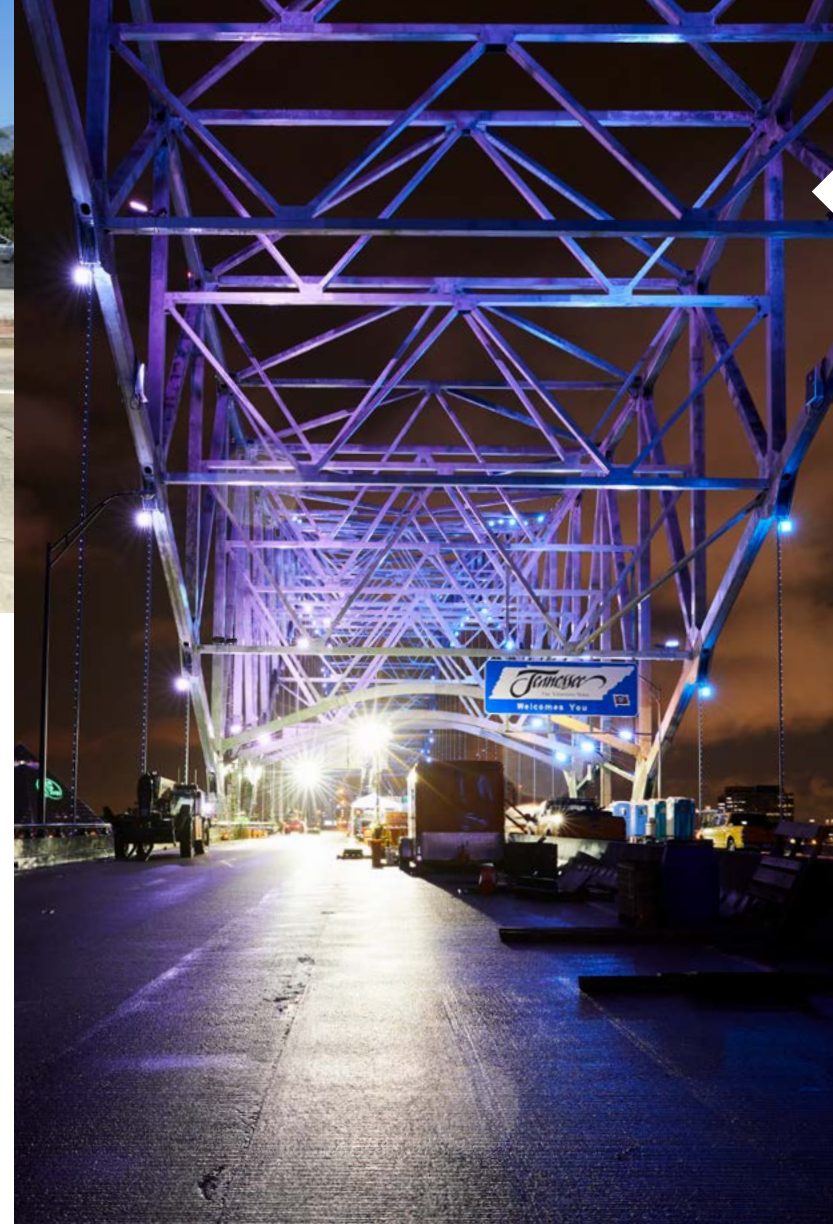


#### **Metro Gold Line Extension Phase 2B, California**

Design-build scope includes nine miles of trackwork, bridge structures, roadway improvements, six new stations and track relocations

#### **Miami International Airport, Florida**

Increased airport's capacity by 25 percent

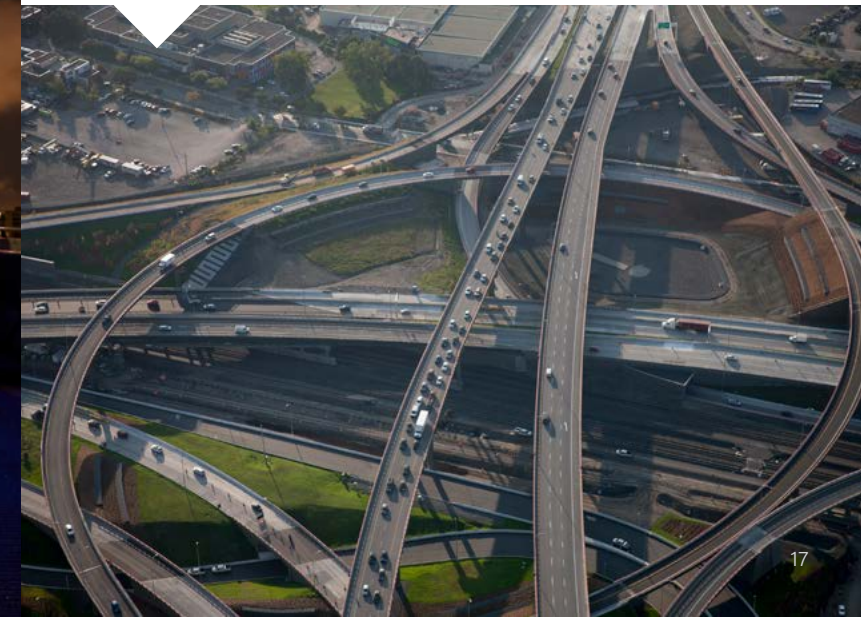


#### **I-40 Hernando DeSoto Bridge Emergency Repairs, Tennessee**

Completed repairs to re-open the I-40 Hernando DeSoto Bridge in 83 days after a fracture in a critical steel tie beam resulted in an emergency shut down

#### **Turcot Interchange, Quebec**

Reconstruction of 42 bridges and reconstruction and relocation of over 90 miles of highway lanes







OIL, GAS & CHEMICAL

Offshore | Oil sands | Gas processing | Pipeline facilities

LNG | Tanks and terminals

Refining and renewable fuels | Petrochemical



#### **Olefins Recovery Project, Texas**

Kiewit completed site construction as part of a joint venture with Chiyoda to engineer, procure and construct the 1.8 MPTA greenfield ethylene plant

#### **Trans Mountain Expansion Project, British Columbia**

Constructed pipeline, facilities and marine terminal expansions in the British Columbia Lower Mainland



#### **Cove Point LNG, Maryland**

After completing FEED, a Kiewit and IHI joint venture was awarded an EPC contract to design, construct, commission and start up an estimated 5.25 MTPA liquefaction facility

#### **Leviathan Topsides Project, Gulf of Mexico**

Performed the fabrication, construction, integration, loadout and sea fastening of the 33,000-ton platform topsides







Renewable energy | Power delivery  
Energy storage | Gas and hydrogen-fired generation  
Nuclear | Coal retrofit



#### **Lackawanna Energy Center, Pennsylvania**

EPC of a 1,485-megawatt natural gas plant that comprises three power islands, each equipped with one GE 7HA.02 gas turbine

#### **Susquehanna-Roseland Electric Reliability Transmission, New Jersey**

Installed 45 miles of double circuit 500-kilovolt transmission throughout New Jersey



#### **Petra Nova Carbon Capture Project, Texas**

General construction and balance-of-plant engineering for CO2 capture from a 240-megawatt slip stream from coal power plant



#### **Timber Road IV Wind Farm, Ohio**

Constructed a 125-megawatt wind farm with 31 Vestas turbines

#### **New Post Creek Hydro Execution Phase, Ontario**

Designed and constructed a new, two-unit, 28-megawatt hydroelectric project







BUILDING

Aviation | Commercial | Data center / mission critical  
Education | Government | Healthcare | Hospitality  
Manufacturing / industrial | Mixed use / retail  
Sports / entertainment | Transit facilities  
Client services / special projects



**University of Hawaii West Oahu (UHWO) Creative Media Facility, Hawaii**

Design-build project for a two-story, 33,800-square-foot facility designed to provide students with hands-on experience in the creative media industry

**U.S. Supreme Court Stone Restoration, Washington D.C.**

Cleaning, repointing and stone restoration of exterior masonry



**Fred & Pamela Buffett Cancer Center, Nebraska**

A 615,000-square-foot cancer center that includes a 98-lab, 10-story research tower and an eight-story clinical tower



**999 Third Ave Plazas, Washington**

A 40,000-square-foot exterior plaza renovation

**Kiewit Ridgeway Campus, Colorado**

A two-building, 410,000-square-foot commercial office campus with capacity to accommodate 1,700 employees







Water treatment and supply | Industrial water | Desalination  
Wastewater and biosolids | Conveyance, dams and storage  
Energy and efficiency



#### **Carlsbad Desalination Plant, California**

A 54-million-gallon-per-day seawater reverse osmosis (SWRO) plant — the largest of its kind in the Americas and the only recipient to date of DBIA's Project of the Year award across all categories

#### **Val Vista Transmission Main Rehabilitation and Replacement, Arizona**

Rehabilitation of 30,000 feet of pre-stressed concrete cylinder pipe to supply more than 60% of the population of Phoenix with 220 million gallons per day of drinking water



#### **Oroville Spillways Emergency Recovery, California**

Kiewit completed massive reconstruction of two spillways in 18 months at the nation's tallest dam

#### **RM Clayton Biosolids, Georgia**

EPC of a Class A biosolids facility that reduces sludge disposal and enhances gas productivity and electrical capacity







Mineral processing | Industrial energy | Waste to energy  
Renewable natural gas | Food and beverage | Pulp and paper  
Metals | Advanced manufacturing | Industrial water



#### **Enviva Hamlet Plant, North Carolina**

Greenfield construction of a new wood pellet manufacturing facility with an expected annual production rate of over 560,000 short tons of wood pellets

#### **Naheola Mill Biomass-Fueled Boiler, Alabama**

EPC of a 550,000-pound-per-hour biomass-fueled boiler and an accompanying steam turbine generator at the Naheola Pulp and Paper Mill

#### **G3 Terminal, British Columbia**

Kiewit engineered, procured, constructed and commissioned a grain export terminal on Canada's west coast to optimize receiving, storage and shipping



#### **Goldstrike TCM Leach Project, Nevada**

Construction included major upgrades to leaching circuits and new site infrastructure. The project was awarded an Associated Builders and Contractors' National Eagle Award

#### **Long Harbour Nickel Processing Plant, Newfoundland**

Uses a hydrometallurgical process to refine 50,000 tons per year of nickel ore







## MINING

Contract mining | Mine infrastructure

Joint venture / owned operations

Mine management and engineering | Reclamation



### Raglan Mines, Quebec

Open pit mining at a nickel sulphide deposit

### San Miguel Mine, Texas

Provide management services to mine and deliver lignite



### Buckskin Mining Company, Wyoming

The largest Kiewit-owned coal mine

### Walnut Creek Mine, Texas

Contract mining services at a lignite operation





# 1884

Brothers Peter and Andrew Kiewit formed Kiewit Brothers in 1884 in Omaha, Nebraska. They began with brick foundation contracts. Commercial construction soon followed.



# 1991

Kiewit was awarded its first design-build transportation mega-project — the \$802 million San Joaquin Hills Transportation Corridor in Orange County, California.



# 2016

Kiewit celebrated its 75th year working in Canada. Since 1941 Kiewit has shaped important infrastructure, iconic landmarks and essential energy developments across the country.



# 1956

In 1956 the Federal Highway Act called for an Interstate Highway System. Kiewit built more lane miles of the system than any other contractor.

# 1984

Kiewit got involved in offshore fabrication in 1984. An early project was Bullwinkle, a 1,635-foot-tall oil production platform.

# TODAY

Kiewit brings more than 135 years of experience, stability and innovation to every project.





**KIEWIT.COM**

**SINCE 1884**